

PRODUCTION STAFF

Lights & Sound Pat O'Leary
Costumes Leah Weekman
Properties Paula Gierke, Mary Kelley, Pat Pitzen
Construction Crew Pat Collier, Jay Kearsley

OUR NEXT PRODUCTION

"Night Watch"

By Lucille Fletcher

Directed by Maggie Jones

Tryouts are Sunday, December 1st, 7:30 p.m.
Cast: 5 men, 4 women

Lobby Art Show is through the courtesy of

Representative Expression Artists League of Fife
Chairman: Pat Juntini, Co-Chairman: Dolores Wiesinger

Did you know that we have special nights just for organizations who want to raise money?

1974 - 75 Season Tickets Are Still on Sale

Adults: \$12.00 Senior Citizens: \$10.00
Students (21 and under): \$6.00

Seven Admissions for this very low price!

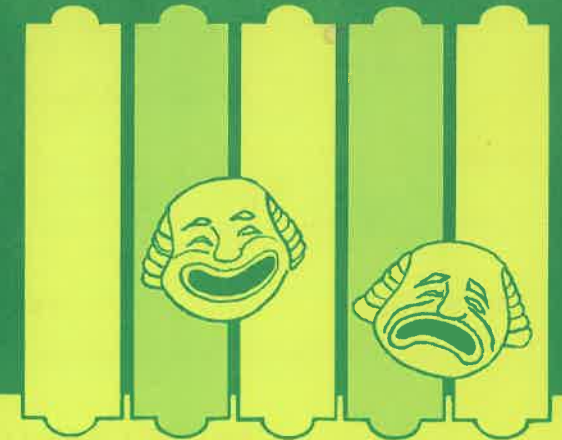
*A special gift for a special friend is a
Season Ticket from the*

TACOMA LITTLE THEATRE

Cookies on opening night donated by
THE CAKERY, South 19th and Stevens

Tacoma Little Theatre

210 North "Eye"



Presents

"The Girls In 509"

by Howard Teichmann

Directed by

Doug Klippert

Nov. 29, 30 — Dec. 6, 7 - 12, 13, 14

1974

Phone 272-2481 for Reservations

"The Girls in 509"

by Howard Teichmann

Director Doug Klippert

Technical Director Jay Kearsley

56th SEASON 349th MAJOR PRODUCTION

(Produced by special arrangements with Samuel French, Inc.)

CAST OF CHARACTERS

(In Order of Their Appearance)

Mimsy **Katherine Stephenson**
Aunt Hettie **Dolores Hays**
Old Jim **Charley Vawter**
Ryan, of the Daily News **Tim Reid**
Pusey **Bob Haywood**
Miss Freud **Linda Clark**
Winthrop Allen **John Miller**
Johnson (of the Daily Mirror) **John Thun**
Miss Rosentahl (of the Post) **Katherine Kwok**
Francis X. Nella **George Spellman**
Aubrey McKittridge **Keith Davis**

SCENES

The entire action of the play occurs in the sitting room of a suite, and in the hallway of a not-now fashionable hotel in New York City. The time is the present.

ACT ONE

Scene 1: *Noon. April 2nd.*
Scene 2: *A few minutes later.*

ACT TWO

Scene 1: *One minute later.*
Scene 2: *Morning. April 3rd.*
Scene 3: *Evening.*

WHO'S WHO

by Sharry O'Hare

Up to this time, **DOUG KLIPPERT'S** forte has been acting, but for the last five weeks he's been sitting on the other side of the footlights to bring you this delightful comedy, "*THE GIRLS IN 509*". Those girls are **DOLORES HAYS** and **KATHERINE STEPHENSON**. Globe hopping is a way of life for **DOLORES HAYS**. She's been everywhere from Bangui to Berlin, which explains her quick wit and friendly manner. On the other hand, **KATHERINE STEPHENSON** is a stateside traveller, currently serving in the Army as Protocol Officer at Ft. Lewis. Her interests are oriented in the fields of Photography and films . . . **NEW FACES** . . . Lending international flair to the cast is **KATHERINE KWOK**. She is a freshman at UPS and has been in America only 10 months. **LINDA CLARK** is a draft writer at United Pacific Insurance. She recently worked props on "You Can't Take It With You" at Bremerton Community Theatre. **TOM REID** was coerced into auditioning by his wife with a little help from a few cocktails. He's an outdoorsman and a sportsman, and is employed by Scott Wetzel Services Bremerton . . . **KEITH DAVIS** comes to us from Auburn and recently did "Importance of Being Earnest" at Valley Community Theatre in Renton. He's on the executive board for the Miss Auburn pageant. Although "Picnic" was **BOB HAYWOOD'S** last TLT production, he's been busy with the 565 Dinner Theatre. He holds a degree in meteorology from Florida State University and is employed by the U.S. Weather Service at the Olympia Airport . . . **JOHN MILLER, CHARLIE VAWTER** and **JOHN THUN** are eligible "bachelors about town". **JOHN MILLER** turned music man this past summer with roles in TLT'S "My Fair Lady" and Lakewood Players "Oliver." **CHARLIE VAWTER'S** been active with the TLT for over 20 years, "Mouse Trap" being his last state effort. He is also the House Technician. Long distance running and playing tennis are among **JOHN THUN'S** favorite pastimes. A TLT veteran of 8 years, he was last seen in "40 Carats."